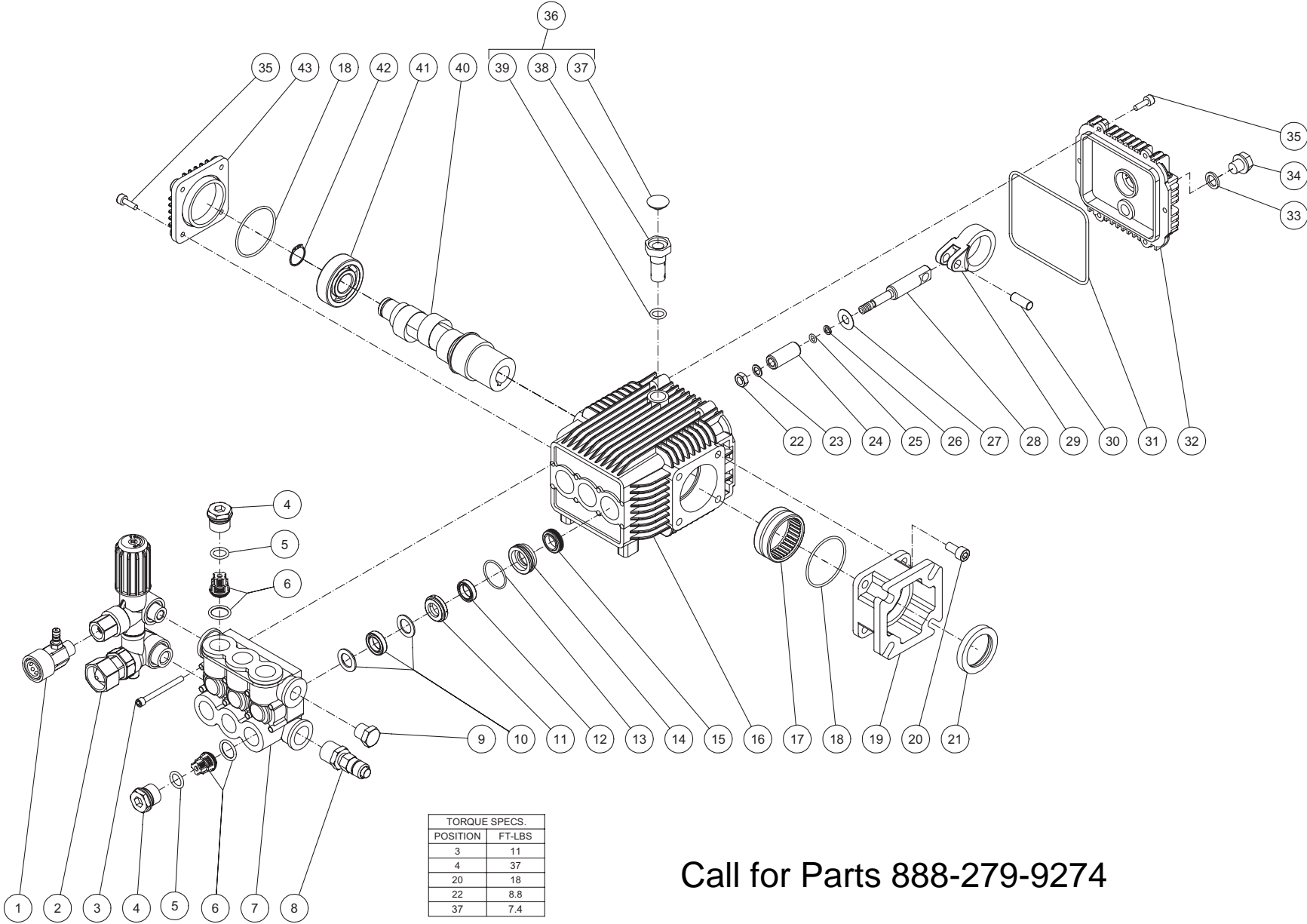


PUMP ASSEMBLY (3-0297)



TORQUE SPECS.	
POSITION	FT-LBS
3	11
4	37
20	18
22	8.8
37	7.4

Call for Parts 888-279-9274

3-0297-072209-CH

3-0297 072209-CH							
PUMP 3-0297							
ITEM	DESCRIPTION	PART #	QTY	ITEM	DESCRIPTION	PART #	QTY
1	OUTLET CONNECTOR	70-0499	1	24	PLUNGER CERAMIC	46-1315	3
2	UNLOADER ASSEMBLY	8-0593	1	25	O-RING	25-0163	3
3	BOLT	27-9598	8	26	BACKUP RING	26-0321	3
4	VALVE PLUG	39-0231	6	27	SLINGER WASHER	46-1316	3
5	O-RING	25-0622	6	28	PLUNGER GUIDE	N/A	3
6	VALVE ASSEMBLY *(SEE 70-0502)	N/A	6	29	CONNECTING ROD	N/A	3
7	MANIFOLD HEAD	N/A	1	30	PISTON	N/A	3
8	THERMAL RELIEF VALVE	22-0005	1	31	O-RING	25-0604	1
9	OUTLET PLUG	39-0203	1	32	CRANKCASE COVER	46-1317	1
10	HIGH PRESSURE PACKING	N/A	3	33	GASKET	26-0322	1
11	SEAL COMPACTION RING	46-1311	3	34	DRAIN PLUG	39-0232	1
12	LOW PRESSURE SEAL	N/A	3	35	BOLT	27-8401	10
13	O-RING	N/A	3	36	DIPSTICK	70-0503	1
14	RETAINER RING	46-1312	3	37	OIL PLUG COVER	N/A	1
15	OIL SEAL	46-1313	3	38	OIL PLUG	N/A	1
16	CRANKCASE	N/A	1	39	O-RING	N/A	1
17	NEEDLE BEARING	N/A	1	40	CRANKSHAFT	N/A	1
18	O-RING	25-0603	2	41	BALL BEARING	48-0063	1
19	FLANGE	46-1314	1	42	SNAP RING	N/A	1
20	BOLT	27-8431	4	43	CRANKSHAFT COVER	N/A	1
21	OIL SEAL	26-0320	1		VALVES KIT (INC. 6 OF 6)	70-0502	1
22	NUT	30-6016	3		"PACKING KIT (INC. 3 OF 10, 12, 13)"	70-0501	1
23	PLAIN WASHER	28-0065	3				

Call for Parts 888-279-9274